



BIOWASTE

in the collection container
or composter

- Fruit and vegetable peels
- Cooled down grease
- Coffee grounds, tea bags, filter papers
- Fish bones, small bones
- Plant parts
- Ham grease, cooking oil
- Food scraps

How to recycle?

- Dispose of any liquids absorbed in kitchen paper, for example.
- Collect liquid biowaste, such as cooking oil, in a milk carton and place it in the biowaste container.
- Pack biowaste in a paper bag or in newspaper before placing it in the collection container.

What's the outcome?

Biogas and fertiliser.



CARTON PACKAGES

in the property's collection
container or to an ecopoint

- Corrugated cardboard boxes
- Ready meal packaging, take-away containers
- Beverage multipacks, such as 6-packs and fully enclosed cartons
- Carton containers, such as milk and juice cartons (including aluminium-lined)
- Dry food packaging, such as cereal and biscuit packages, flour bags and bread bags with windows
- Wrapping papers, such as copying paper wrappers
- Paper bags and carriers
- Pizza boxes, egg cartons
- Toilet and kitchen paper cores

How to recycle?

- Make sure that the packages are empty, dry, flattened and packed inside each other before taking them to be recycled.
- If necessary, rinse the packages with cold water and let them dry.
- Sort any plastic caps into plastic packaging collection and dirty packages into mixed waste.

What's the outcome?

Envelopes, carton packages, corrugated cardboard and various carton cores.



PLASTIC PACKAGES

in the property's collection
container or to an ecopoint

- Food packaging, such as yoghurt containers, butter tubs and packages for cold cuts, cheese and convenience food
- EPS (expanded polystyrene) packaging
- Carriers, bags, wrappings
- Toy, tool, garden and fishing equipment packaging
- Detergent, shampoo and soap packages
- Bottles, canisters, cans, tubes

How to recycle?

- Empty and dry packaging only.
- If necessary, wipe the packages clean or rinse them with cold water and let them dry.
- Detach any caps, lids and pump parts and place them separately in the collection container.
- Sort dirty packages and other plastic into mixed waste.

What's the outcome?

Flowerpots, dish and toilet brushes, plastic bags and refuse sacks.



METAL

in the property's collection container or to an ecopoint

- Aluminium foil, tins and lids
- Lids, caps, closures
- Non-deposit beverage cans
- Small metal items, such as pots, frying pans, cutlery, scissors and hand tools
- Food cans
- Casings of tea lights and outdoor candles
- Empty aerosol cans

How to recycle?

- Empty and dry packaging only.
- Deliver packaging containing residues of dangerous substances or pressure (e.g. paints, chemicals, oils, hairspray) to a hazardous waste reception point.
- Deliver large metal items to a waste sorting centre.

What's the outcome?

New metal packages, bicycle frames, shovels and car parts.



GLASS PACKAGES

in the property's collection container or to an ecopoint

- Glass jars
- Non-deposit glass bottles

How to recycle?

- Return deposit glass bottles via a reverse vending machine located in shops.

What's the outcome?

New glass jars and bottles as well as some building products, such as foam glass.

GLASS AND CERAMICS

to an ecopoint

- Glassware, such as drinking glass, ovenware
- Porcelain, ceramics and crystals
- Window and mirror glass

What's the outcome?

Soil construction material



PAPER

in the property's collection container or to an ecopoint

- Envelopes (including ones with windows)
- Copy paper, printouts, notepad paper
- Advertisements, brochures, product catalogues
- Newspapers and magazines

How to recycle?

- Clean and dry material only.
- Staples and paperclips do not need to be removed.

What's the outcome?

Newsprint, toilet paper and hand paper towel.





MIXED WASTE in the property's collection container

- Underwear, socks, shoes, belts, bags
- CDs, DVDs and LPs, floppy disks, cassettes
- Smelly and dirty textiles
- Incandescent and halogen light bulbs, fuses
- Hygiene products, such as disposable nappies, menstrual products and cotton swabs
- Hand paper towels
- Gift wrapping paper
- Pet bedding
- Dirty cardboard, carton, paper and plastic packages
- Plastic items, such as toys, toothbrushes, freezer containers
- Leather, faux leather, rubber
- Mirrors, pieces of broken window glass, porcelain, ceramics
- Small wooden items
- Chewing gum
- Vacuum cleaner dust bags, cleaning waste
- Ash, cigarette butts
- Pillows, pet beds

How to recycle?

- Individual pieces of non-combustible materials, such as glass and ceramics, can be sorted into mixed waste deliver larger amounts to a waste sorting centre.

What's the outcome?

Used to generate energy at the waste-to-energy plant.



END-OF-LIFE TEXTILES to a collection point for end-of-life textiles

Clean and dry, but broken or worn out:

- Trousers, skirts, shirts, coats
- Sheets, towels, tablecloths

How to recycle?

- No underwear, socks, tights, shoes, bags, belts, carpets, pillows, blankets, padding and soft toys or damp, mouldy, smelly or pest-infested textiles.

What's the outcome?

Recycled fibre for yarn, non-woven fabrics, insulation, acoustic panels, filter cloth and composites.

REUSABLE TEXTILES

Sell or donate

- Household textiles, such as sheets, curtains and tablecloths
- Bags, shoes
- Clothing, accessories, belts
- Toys

What's the outcome?

The textiles will be reused modified or as they are.



HAZARDOUS WASTE to a waste sorting centre or hazardous waste collection free of charge for households

- Lead-acid batteries for vehicles and machinery
- Energy-saving light bulbs, fluorescent lights
- Perfume, aftershave, nail varnish, nail varnish remover
- Coolant and brake fluid
- Gas cylinders and cartridges
- Plant protectants and pesticides and their packaging
- Uncured paint, glue and varnish waste and their aerosol cans
- Impregnated wood
- Used oil, oily waste (e.g. cotton waste), oil filters
- Unusable fire extinguishers with powder inside
- Solvents, such as turpentine, acetone, petrol and solvent-based detergents
- Wash water of painting tools
- Pressurised packages, such as hairspray cans (that slosh or hiss)
- Wood preservatives and impregnants
- Cleaning and disinfecting agents with warning labels
- Batteries for electric bikes and scooters

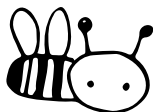




ELECTRIC AND ELECTRONIC EQUIPMENT

to a waste sorting centre or another official reception point free of charge for households

- Home electronics, such as televisions, computers, musical instruments and phones
- Household appliances, such as refrigerators, stoves and washing machines
- Electric wires and cables for devices, extension cords
- Clocks, meters and toys that run on batteries
- Small appliances, such as coffee makers, electric toothbrushes, blenders and toasters
- Electric tools
- Control and monitoring equipment, control devices of heating systems
- Lamps, string lights



BATTERIES AND SMALL ACCUMULATORS to a shop free of charge for households

- Alkaline, lithium and button batteries
- Batteries for mobile phones, laptops, cameras and rechargeable tools
- Rechargeable batteries
- Small accumulators for UPS and alarm systems and solar cells

How to recycle?

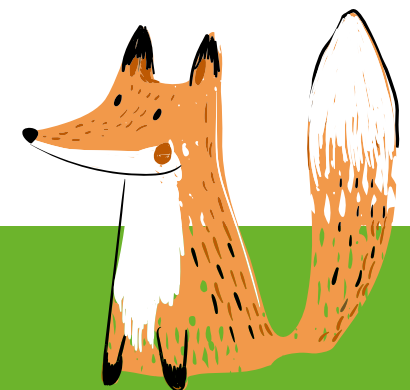
- Deliver to shops free of charge for households.
- Cover the terminals of batteries and accumulators with tape.
- Place leaking batteries in a bag.



MEDICAL WASTE to a pharmacy free of charge for households

- Mercury thermometers packaged
- Medicines containing iodine and bromine as well as cytostatic agents in their own packaging
- Liquid medicines, creams and sprays in their own packaging
- Needles and pointed objects packaged in a sealed plastic or glass bottle
- Tablets in their own strips or loose in a transparent bag

Thank you for sorting your waste!



METSÄSAIRILA



THE NEAREST ECOPOINTS CAN BE FOUND AT
WWW.KIERRÄTYS.INFO